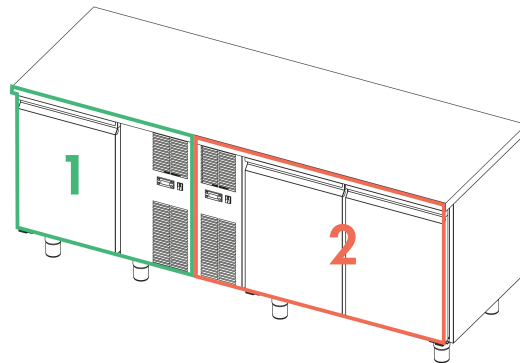


DAI MT CB H660 1980x700 T TN/TN SP60 PL 230/50

66509130



DIMENSIONS AND WEIGHTS

External dimensions in mm. (LxPxH): 1980x700x850
Net/gross weight in Kg.: 160/192
Through-in door dimensions in mm. (LxP): 362x542
Capacity (Liters): 120+180
Packaging dimensions in mm. (LxPxH): 2300x750x1100
Insulation thickness: 60 mm

TECHNICAL FEATURES

Voltage: 230V / 50Hz / 1
Defrosting: Automatic
Electronic temperature control device: Yes
Condensation discharge: Automatic
Construction materials: Stainless steel aisi 304 with external bottom on zinc plated steel and back on stainless steel aisi 430
EVAPORATION RESISTANCE: /
DEFROSTING RESISTANCE: /
LIGHTING ABSORPTION: /
Freon (section 2): R290
Refrigerant charge (section 2): 0,085
Out put (Section 2): 335W
Absorption (Section 2): 272W / 1,61A
Freon (section 1): R290
Refrigerant charge (section 1): 0,080
Out put (Section 1): 335W
Absorption (Section 1): 242W / 1,53A

GENERAL FEATURES

Refrigeration system : vetilata
Built-in motor: Yes
On castors: On demand
Lighting: No
Door with magnetic seal: Yes
Doors with return: Yes
Equipment grate: 3 x GN 1/1
Working temperature (section 2): 0°/+8°C
Working temperature (section 1): 0°/+8°C

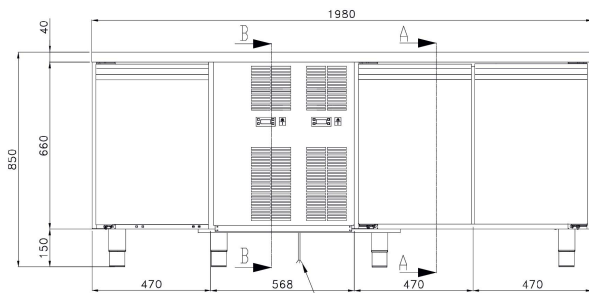
ENERGETIC FEATURES

Climate class: 5 (40°C - 40%)
Typology: Horizontal Cabinet
Performance: High performance - This appliance is intended for use in ambient temperatures up to 40 ° C
Category (Section 1): Storage
Category (Section 2): Storage
Refrigeration Volume Vnref (L) (Section 2): 176
Freezing Volume Vnfrz (L) (Section 2): -
Daily power consumption E24 h (Section 2): 1,18
Annual absorption AEC KWh/Annum (Section 2): 431
Refrigeration Volume Vnref (L) (Section 1): 88
Freezing Volume Vnfrz (L) (Section 1): -
Daily power consumption E24 h (Section 1): 1,14
Annual absorption AEC KWh/Annum (Section 1): 416
IEE energy efficiency index: 20,65

STUDIO 54 SRL

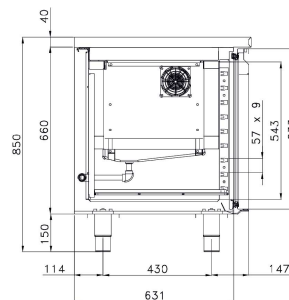
Via Gian Lorenzo Bernini 147 - 35010 San Giorgio in Bosco PD
T +39 049 9450466 - F +39 0499451044 - Cod. fiscale e p.iva 00096970280 - R.E.A. n. 247856
www.studio-54.it info@studio-54.it

TECHNICAL DESIGN

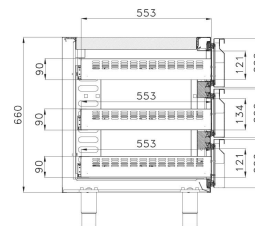
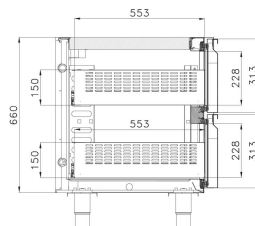
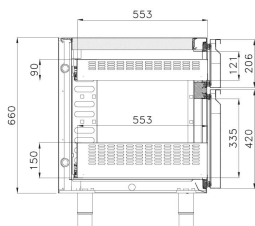
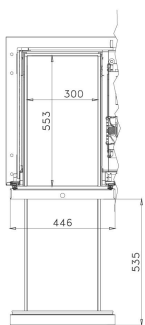
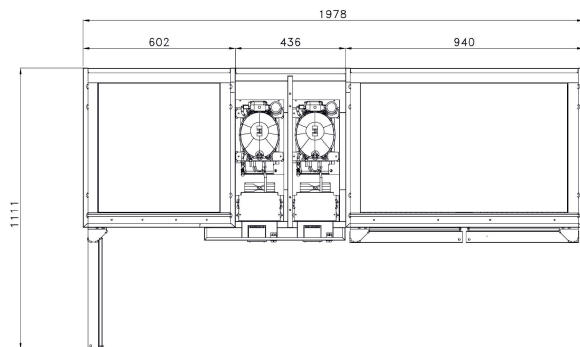
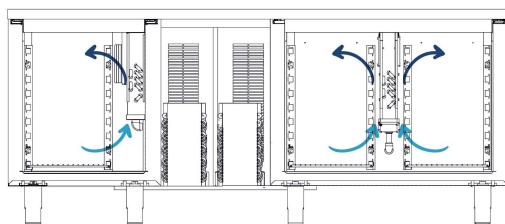
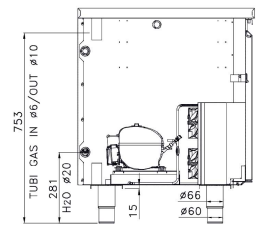


USCITA CAVO ALIMENTAZIONE
230V/50Hz/1N L=3000mm
+ SPINA SHUKO FORNITA

POWER CABLE OUTLET
230V/50Hz/1N L=3000mm
+ SCHUKO PLUG SUPPLIED



691



OPTIONAL

STUDIO 54 SRL

Via Gian Lorenzo Bernini 147 - 35010 San Giorgio in Bosco PD
T +39 049 9450466 - F +39 0499451044 - Cod. fiscale e p.iva 00096970280 - R.E.A. n. 247856
www.studio-54.it info@studio-54.it